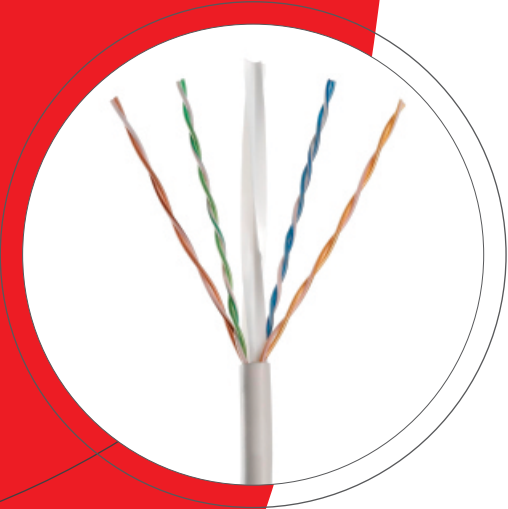
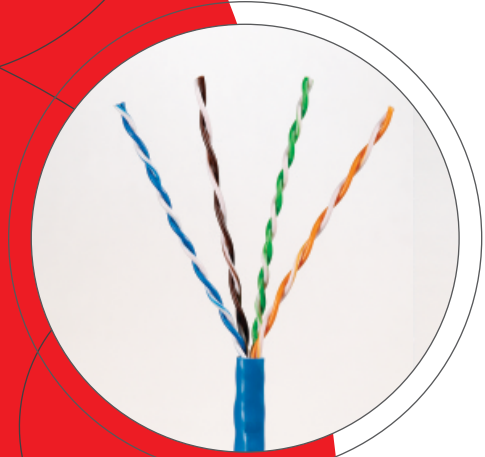


Connecting

an ever changing world



LEON
enabling connectivity



Supplier Approval *



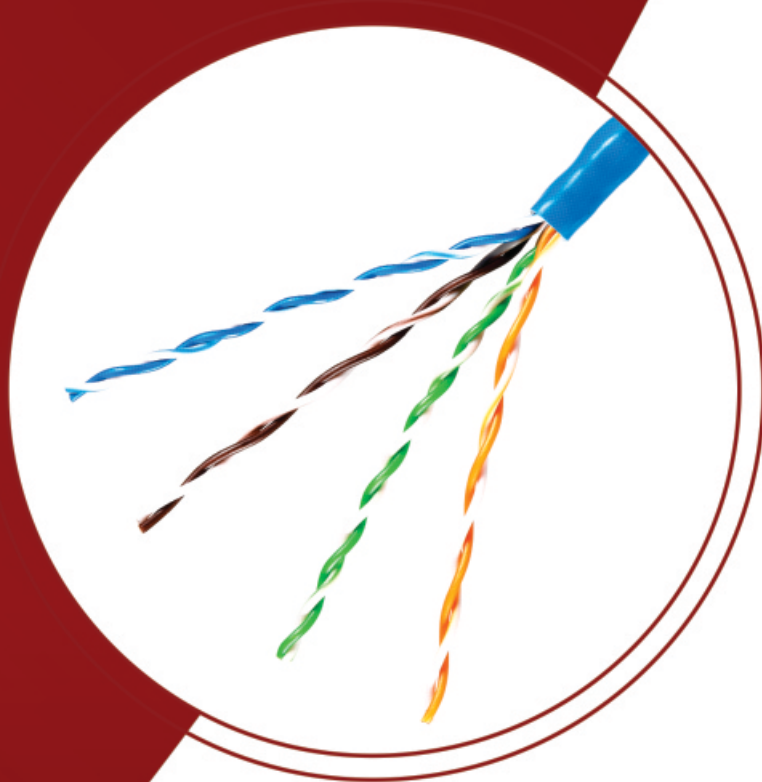
Connecting

to L-Con Technologies

Company Profile

L-con technologies is a leading company in the IT and Telecom industry. L-con as a brand is associated with quality assurance and innovations to provide connectivity solutions {it, telecom, automation}. We are committed to providing our customers with the latest, technically viable communication cables and respective line of products without quality compromise at the most competitive prices.

Our aim is to provide a complete connectivity solution at one stop offering a range of products to enable connectivity.



CATEGORY 5E 350MHz UTP CABLE (SOLID/STRANDED)

Enhanced High performance ANSI/TIA/EIA 568-B.2 compliant Category 5 ENHANCED UTP cables for mission critical LAN applications or future proofing your Structured Cabling Systems.

PRODUCT ELECTRICAL CHARACTERISTICS (SOLID)

- Features: Impedence 100 +/- 15 ohms
- Mutual Capacitance, MAX. nf/1000ft 17.1
- DC Resistance, MAX. Ohms/1000ft 28.6
- DC Resistance, unbalance of a pair: 5% MAX
- Capacitance unbalance(pair to ground): 330pF/100m MAX.
- Propagation delay skew: 40nS/100M

PRODUCT ELECTRICAL CHARACTERISTICS (STRANDED FOR PATCH CORD)

- Features: Impedence 100 +/- 15 ohms
- Mutual Capacitance, MAX. nf/1000ft 17.1
- DC Resistance, MAX. Ohms/1000ft 28.6
- DC Resistance, unbalance of a pair: 5% MAX
- Capacitance unbalance(pair to ground): 330pF/100m MAX.
- Propagation delay skew: 40nS/100M

APPLICATIONS

- 10 BASE T (IEEE 802.3)
- 100 BASE T (IEEE 802.3U)
- 100 Vg-any LAN (IEEE 802.12)
- TOKEN RING (IEEE 805.5)
- TP-PMD9ANSI X3T9.5
- 100 MbPS CDDI
- ATM 155
- FOR TELECOM AND INDUSTRIAL AUTOMATION

PRODUCT DESCRIPTION

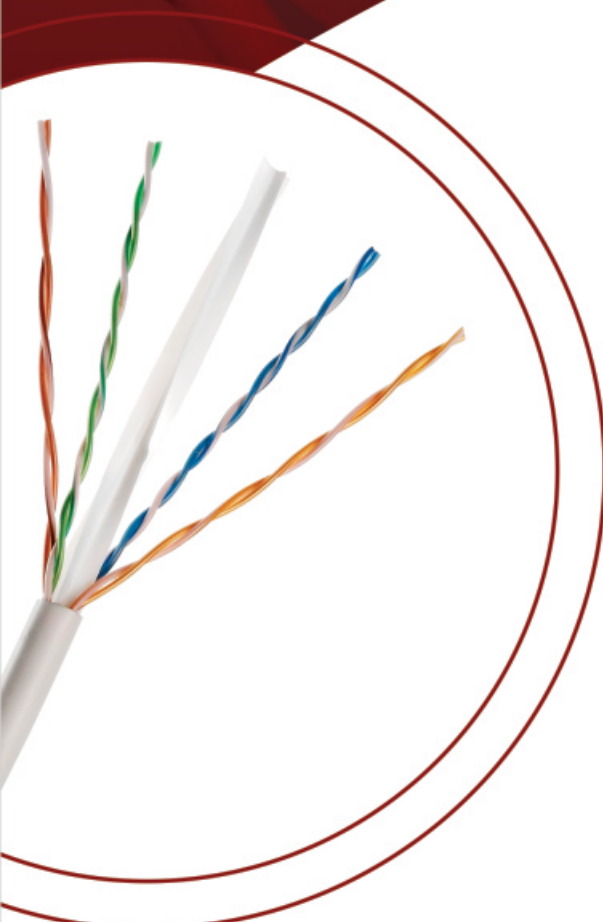
- CONDUCTOR: 24AWG BARE SOLID/STRANDED COPPER
- INSULATION: HDPE
- RIPCORD: UNDER JACKET
- JACKET: FRPVC

STP & FSTP Cables Available



Connecting

a dynamic world



CATEGORY eXtreme 6+ 550MHz UTP CABLE

Enhanced High performance ANSI/TIA/EIA 568-B.2.1 CAT6 compliant Category 6 ENHANCED UTP cables for mission critical LAN applications or future proofing your Structured Cabling Systems.

PRODUCT ELECTRICAL CHARACTERISTICS

- Features: Impedence 100 +/- 15 ohms
- Mutual Capa citance, MAX. nf/1000ft 17.1
- DC Resistance, MAX. Ohms/1000ft 28.6
- DC Resistance, unbalance of a pair: 5% MAX
- Capacitance unbalance(pair to ground): 330pF/100m MAX.
- Propagation delay skew: 30nS/100M

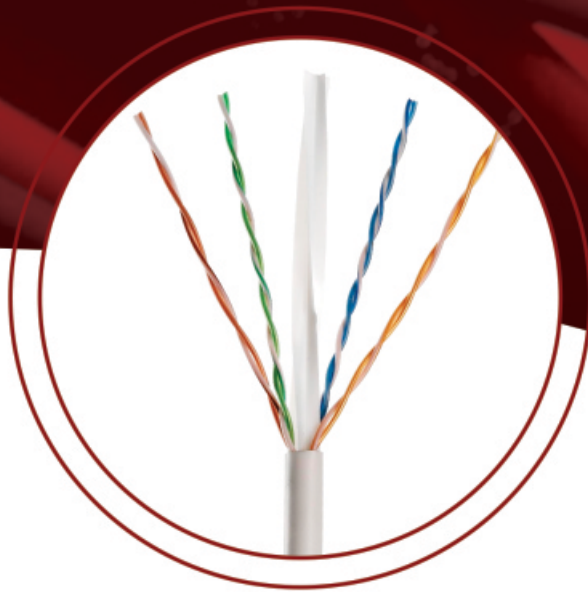
APPLICATIONS

- 10 BASE T (IEEE 802.3)
- 100 BASE T (IEEE 802.3U)
- 100 Vg-any LAN (IEEE 802.12)
- TOKEN RING (IEEE 805.5)
- TP-PMD9ANSI X3T9.5
- n100 MbPS CDDI
- ATM 155
- ATM 622 1000 Base-T

PRODUCT DESCRIPTION

- CONDUCTOR: 23AWG BARE SOLID COPPER
- INSULATION: HDPE
- RIPCORD: UNDER JACKET
- JACKET: FRPVC GREY COLOUR





CATEGORY 6 550 MHz UTP CABLE(STRANDED)

High performance ANSI/TIA/EIA 568-B.2.1 CAT6 compliant Category 6 UTP cables for mission critical LAN applications or future proofing your Structured Cabling Systems.

PRODUCT ELECTRICAL CHARACTERISTICS

- Features: Impedence 100 +/- 15 ohms
- Mutual Capacitance, MAX. nf/1000ft 17.1
- DC Resistance, MAX. Ohms/1000ft 28.6
- DC Resistance, unbalance of a pair: 5% MAX
- Capacitance unbalance (pair to ground): 330pF/100m MAX.
- Propagation delay skew: 30nS/100M

APPLICATIONS

- 10 BASE T (IEEE 802.3)
- 100 BASE T (IEEE 802.3U)
- 100 Vg-any LAN (IEEE 802.12)
- TOKEN RING (IEEE 805.5)
- TP-PMD9ANSI X3T9.5
- 100 Mbps CDDI
- ATM 155
- ATM 622 1000 Base-T

PRODUCT DESCRIPTION

- CONDUCTOR: 23AWG BARE STRANDED COPPER
- INSULATION: HDPE, FEP
- RIPCORD: UNDER JACKET
- JACKET: FRPVC



On basis of MOQ colors available

Black, Blue, Grey, White, Purple, Yellow, Green, Orange.

Connecting

an information driven world

10GS LAN UTP Augmented Cat.6 4Pair/23AWG

PRODUCT FEATURES

- Great performance with headroom of up 6db
- 10GS LAN SUPPORTS IEEE 802.3an 10G BASE-T STANDARD and TIA/EIA 568-B.2-10 DRAFT.7
- All materials comply with ROHS standard
- Test range from 1 to 750 MHz

PRODUCT DESCRIPTION

- Jacket: Low-Smoke, flame- retardant PVC
- Insulation: PE/FEP
- Spline: PE/FEP
- Conductor: 23AWG Solid bare copper
- Cable assembly: 4 pairs cabled together with a spline core separator

PRODUCT ELECTRICAL CHARACTERISTICS

- Features: Impedence 100 +/- 15 ohms(10-550MHz)
- DC Resistance, unbalance of a pair: 3% MAX
- Capacitance unbalance(pair to ground): 330pF/100m MAX.
- Propagation delay skew: 25nS/100M



10GS LAN FTP Augmented Cat.6A 4Pair/23AWG

Augmented Category 6 A specifies cable operating at minimum frequency of 500 MHz, for both shielded and unshielded. It can support 10 Gbit/s applications up to the maximum distance of 100 meters on a 4-connector channel.

PRODUCT FEATURES

- 10GS-F supports IEEE 802.3an 10G BASE-T STANDARD, and TIA/EIA 568-B.2-10 DRAFT.9
- All materials comply with ROHS standard
- Test range from 1 TO 650 MHz





Copper Cables For
IT, Telecom & Automation

Structured Cabling
Accessories For Cat 5E, Cat 6 & 10G

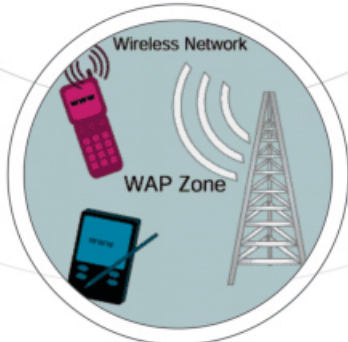
Connecting! And counting more...



Copper & Fibre
Patching Solutions
For IT, Telecom & Automation



Fibre Wiring Systems



Cable For Wireless Application

Please also visit us
online @ www.l-contechnologies.co.in
for more updates.

Any queries for related accessories and connectors
will be entertained.

We will entertain inquiry
for IT related access

L-CON TECHNOLOGIES
(Catalog for IT Division)

205-2B Wing, Shubham Centre, Cardinal Gracious Road,
Chakala, Andheri (E) Mumbai - 400 099. (INDIA)

Tel.: 022 28324823 | 66791343

Fax.:022 66791343

Mob.:+91 9820157508

E-Mail: support@l-contechnologies.co.in

website: www.l-contechnologies.co.in